

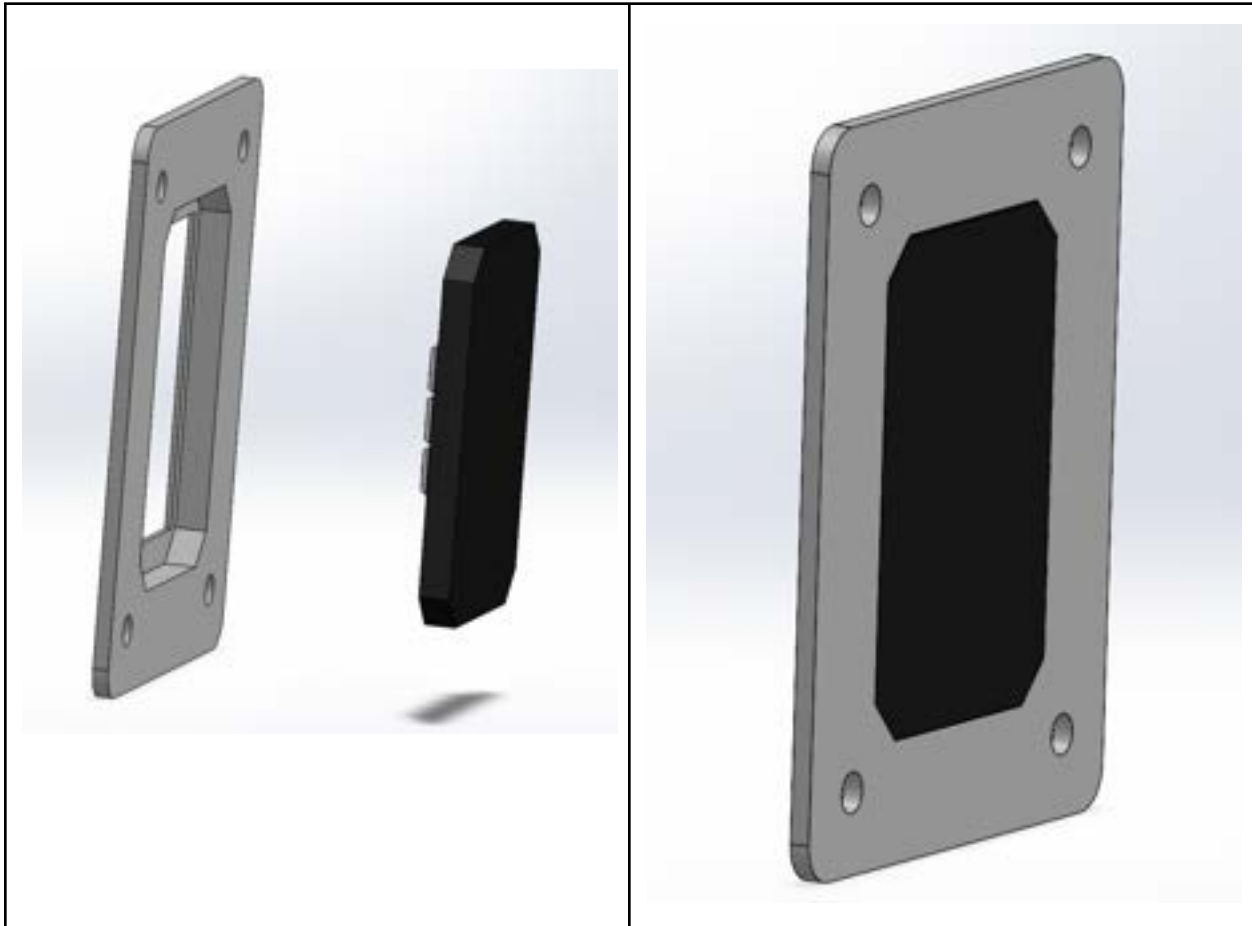
# DELIVERY BOX

## Parts List:

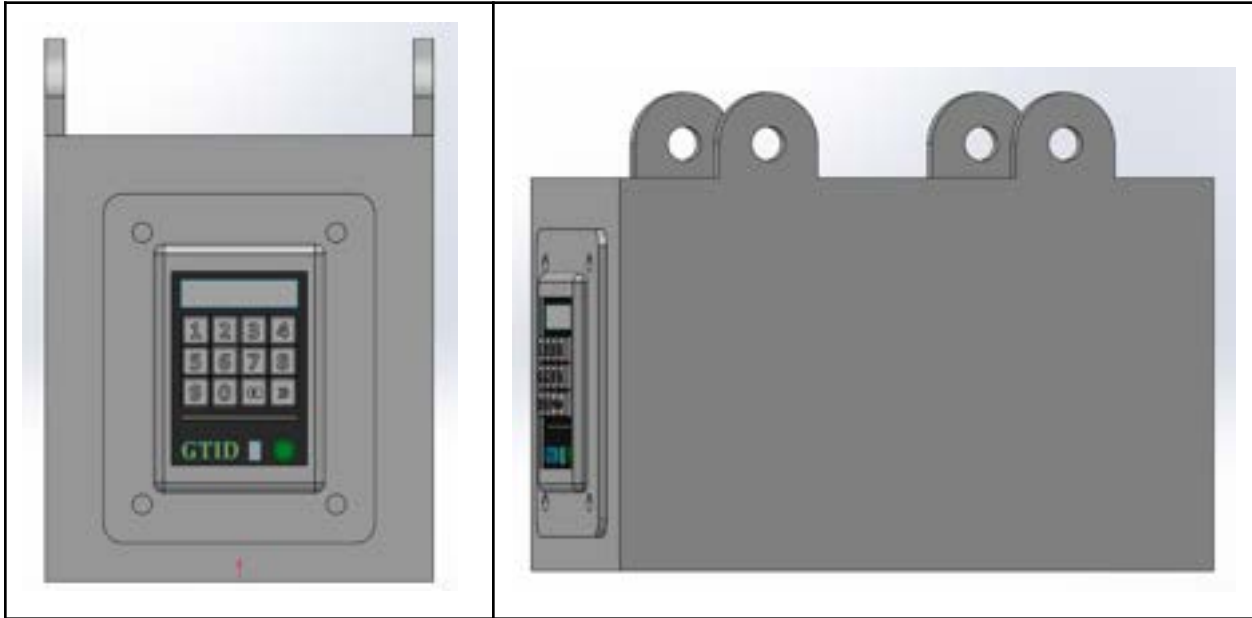
- Main Box (1)
- Box Lid (1)
- Keypad (1)
- Keypad Cover (1)
- (98164A548) 1/2" Button Head Screws (4)
- (90630A160) 1/2" Locknuts (4)
- Box Dividers (2)
- Lift Rods (2)
- Lift Rod Snap Fits (2)

## Assembly Instructions:

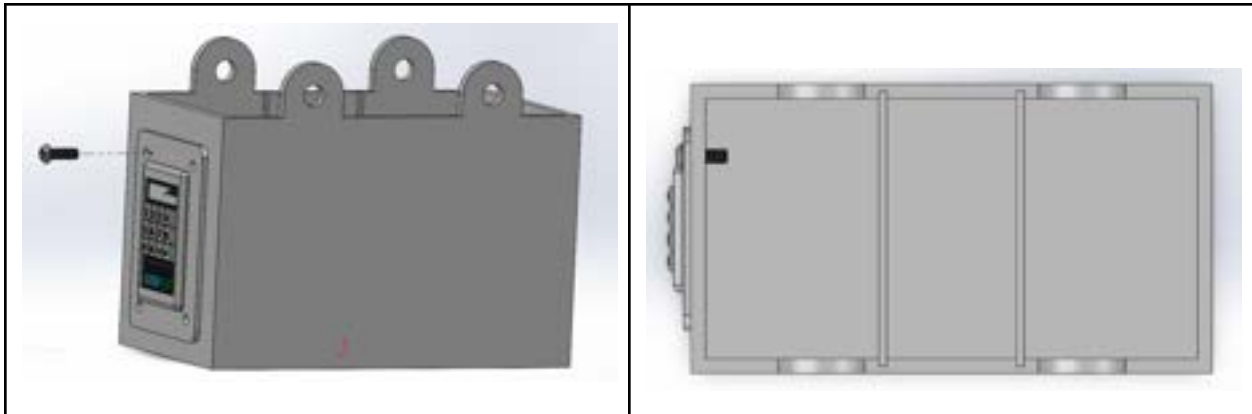
1. Fit the keypad into the slot on the keypad cover, and make sure that the front of the keypad (the side with buttons) is protruding from the smaller side of the keypad.



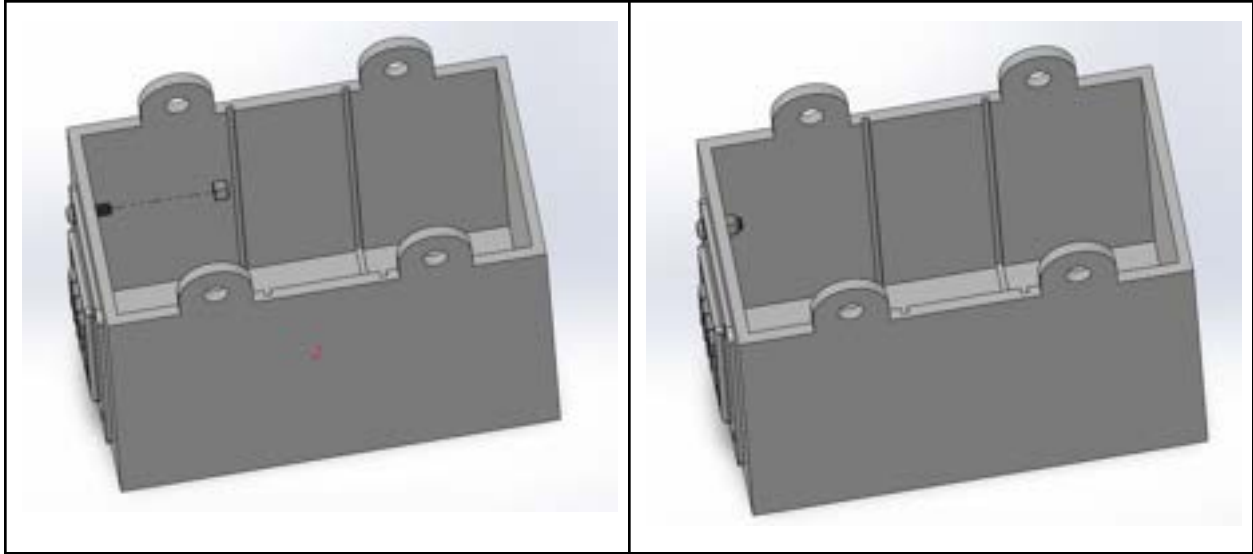
- Align the four holes at the corners of the keypad cover with the holes on the right side of the delivery box while ensuring that the keypad is orientated right side up. The flush side of the keypad assembly should be facing the box.



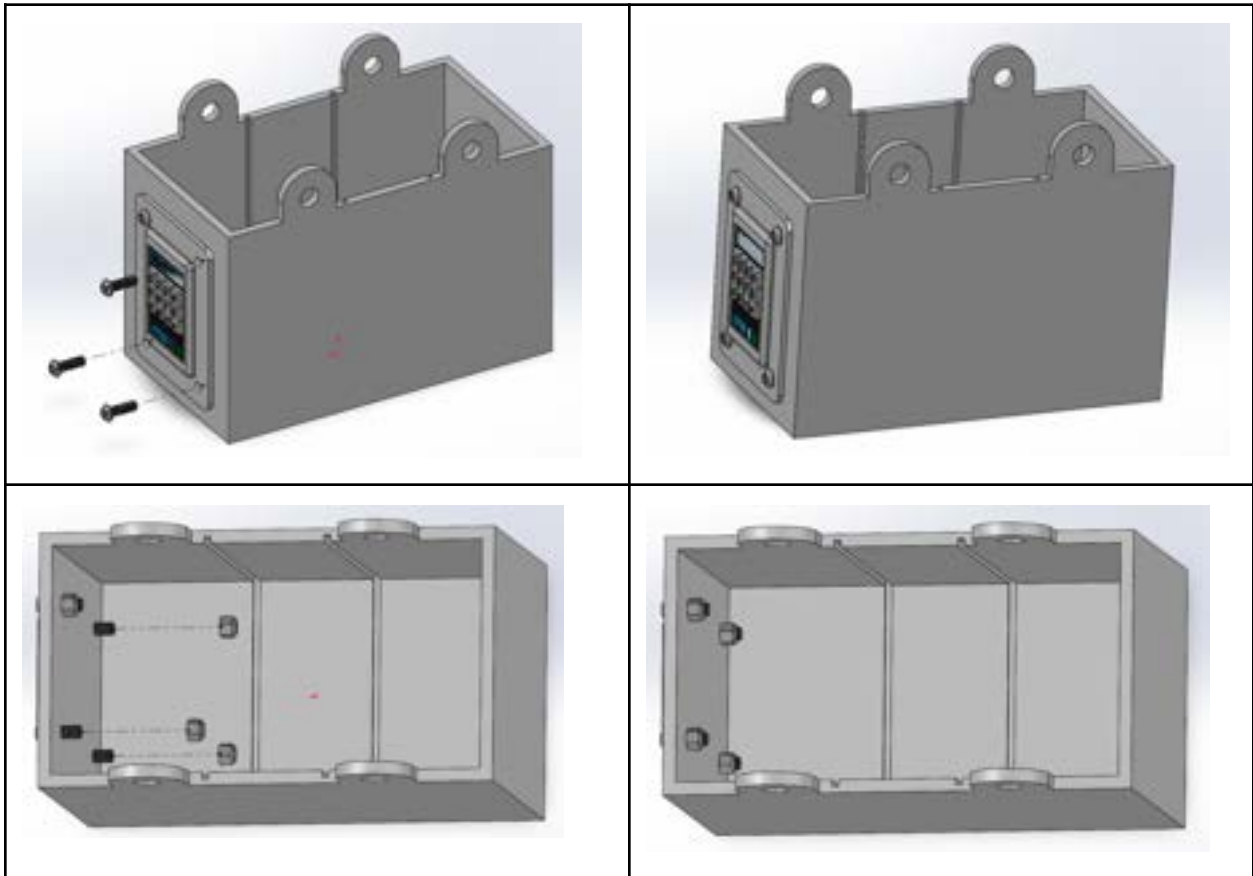
- Insert a screw from the outside of the box through the top left aligned hole, ensuring that it goes through the keypad cover and protrudes into the delivery box.



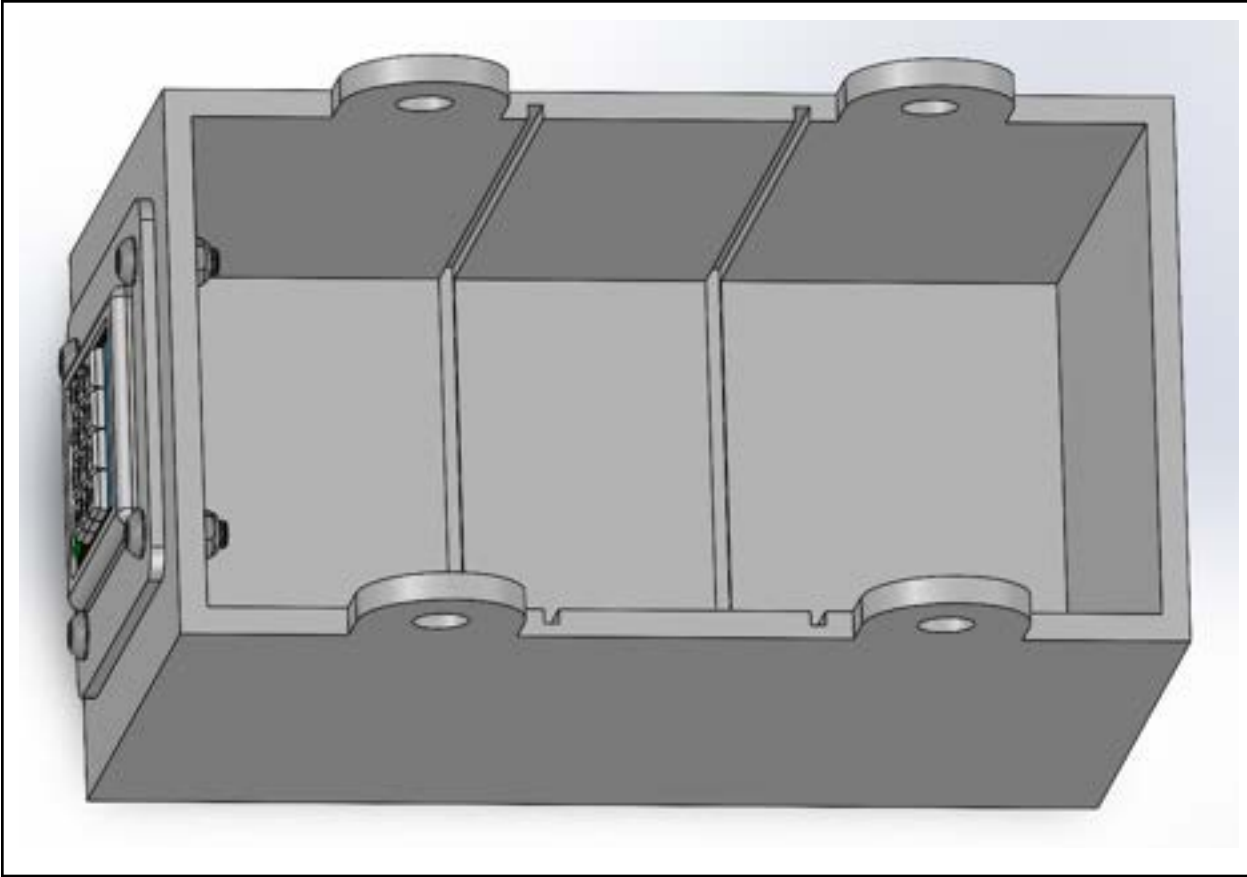
4. Fasten a locknut on the end of the screw that's inside the delivery box and *hand tighten* it (we'll completely tighten after putting on the other screws and locknuts).



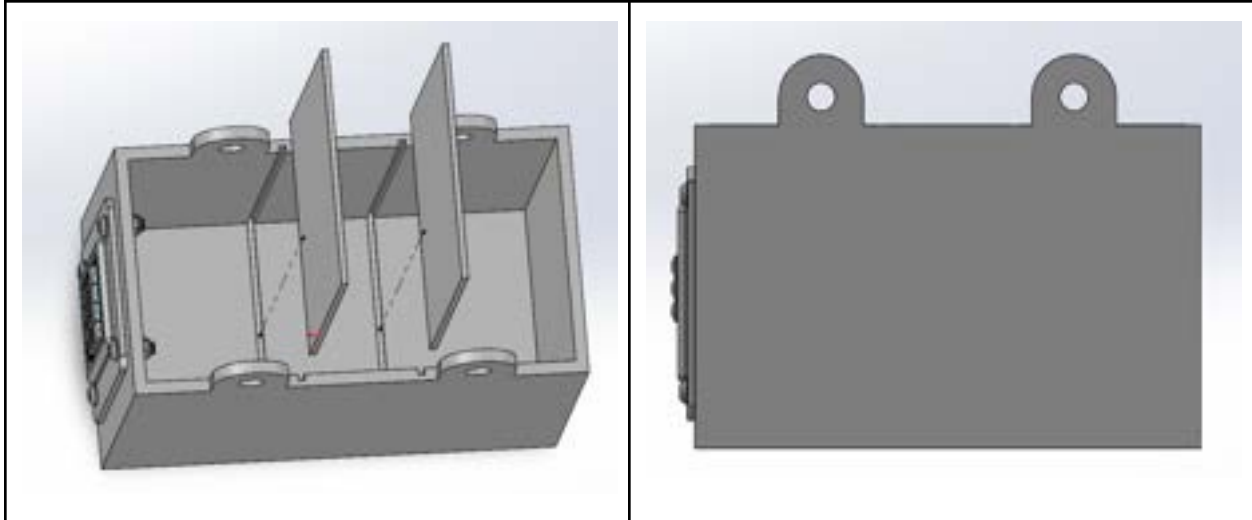
5. Repeat steps 3 & 4 for the other corner holes of the keypad cover.



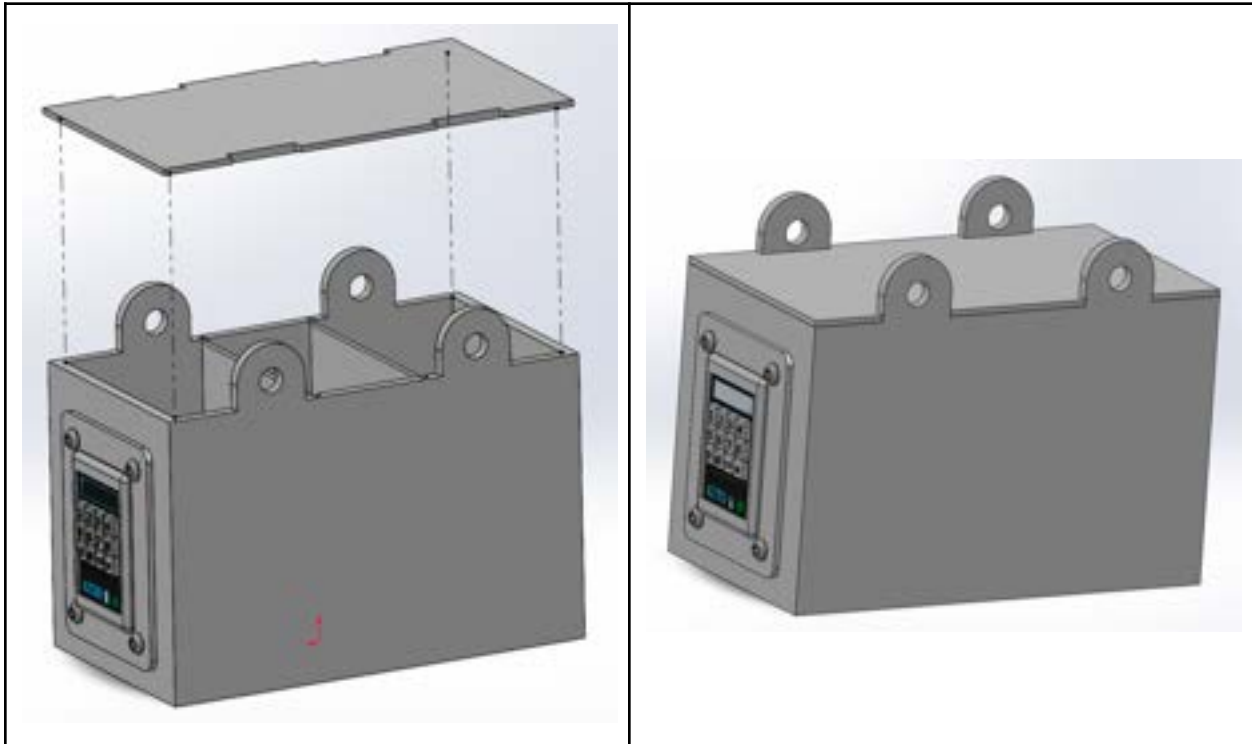
6. After each screw and nut has been attached, fasten each nut so the keypad cover doesn't move or shake.



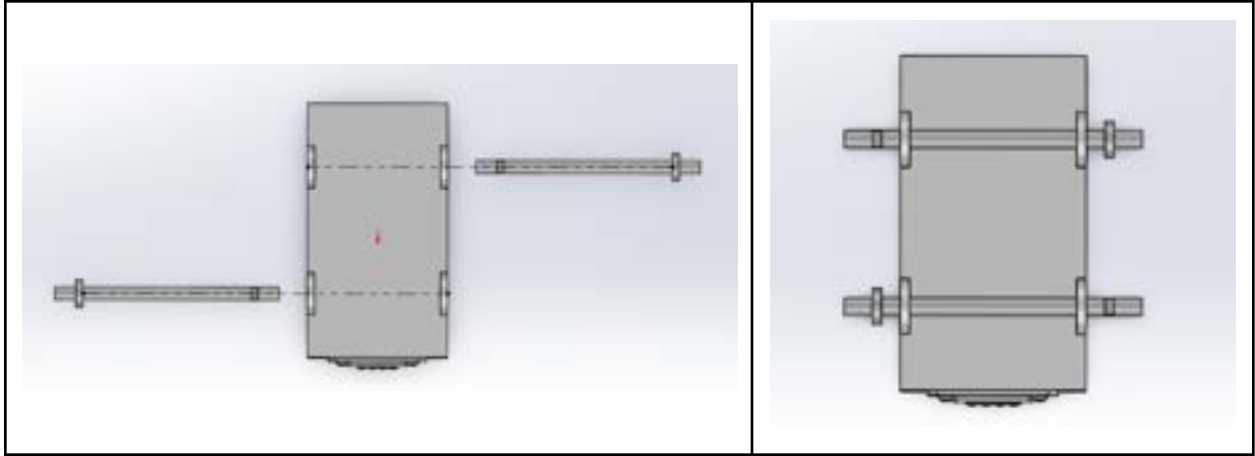
7. From the top of the delivery box, insert the dividers, ensuring that when viewed from the side, no dividers are sticking out.



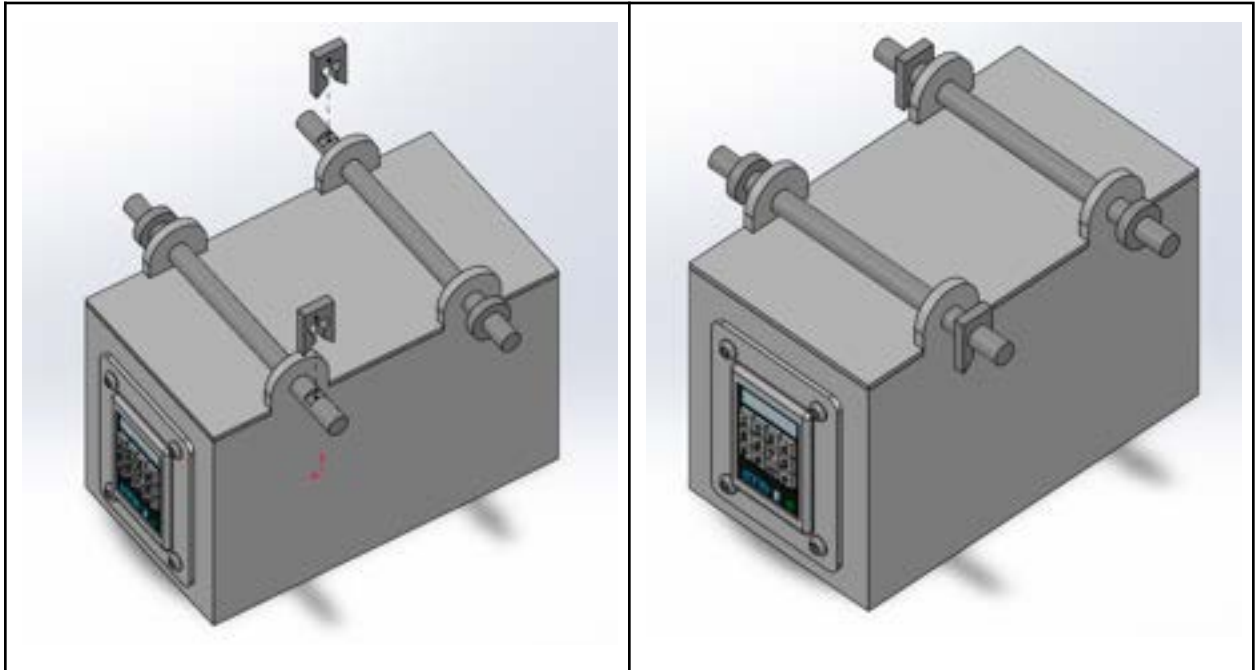
8. From the top of the delivery box, place the box lid on, aligning the gaps in the lid with the protruding rod slots on the main box. Make sure that the smaller side of the lid is facing the interior of the delivery box.



9. Insert the long end of a rod into a rod slot, keeping the leveled portion of the rod facing up. Insert the other rod into the other rod slot in a similar fashion, but flip it horizontally.



10. From the top, take a rod snap fit and push it down into the snap fit slot of the rod (the level part of the rod). Do the same for the rod on the other side of the box. A *click* sound indicates that the components have snapped together.



11. Assembly done!